

shindaiwa®

RealDual® 500



Field of Application

★ Excellent ★ Good

- ★ Construction
- ★ Fabrication
- ★ Piping
- ★ Mining
- ★ Railroad
- ★ Offshore
- ★ Rental
- ★ Civil Engineering
- ★ Service Truck
- ★ Maintenance
- ★ Repair
- ★ Farming

Welding Process

★ Excellent ★ Good • Standard

- CC Mode
- ★ Standard Rod
- ★ Cellulose Rod
- ★ Scratch TIG
- Gouging 9.5mm

Specification

Welding DC Generator

CC	Single	Dual
Rated Current (A)	480	230
Rated Voltage (V)	39.2	29.2
Duty Cycle (%)	60	80
Current Adj. Range (A)	60-500	30-280
Welding Rod Capacity (mm)	Φ2.6-8.0	Φ2.0-6.0
Gouging Rod (mm)	Φ3.2-9.5	Φ3.2-5.0

AC Generator

Rated Frequency (Hz)	50	
Rated Speed (min ⁻¹)	3000	
Phase	1-Phase	3-Phase
Rated Output (kVA)	10.8	15
Rated Voltage (V)	240	415
Rated Current (A)	15Ax3	20Ax1
Power Factor	1.0	0.8

Dimensions

Overall Dimensions (mm)	(L)1680 x (W)700 x (H)980
Dry Weight (Kg)	586

Noise Level

Lowest @7m/idle	57dB(A)
No Load Voltage (OCV)	Max 85V

Engine

Powered by	Model	Kubota V1505	Rated Output (kW/min ⁻¹)	24.5 / 3000	27.0 / 3600
	Engine Type	Vertical, Water-cooled, 4 cycle diesel	Fuel Tank Capacity (L)	63	
	Displacement (L)	1.498			

Definition of the icons

- REALDUAL Welding Mode
- Max open circuit voltage
- Easy arc start
- Preset welding current
- Adjust arc strength between soft and crisp
- Stop engine immediately
- Voltage regulation device
- 2 connection of welding remote control

DGW500DM-415CC

Control Panel



1. AC Meter
2. DC Meter
3. Hour Meter
4. Monitor Lamp
5. VRD Lamp
6. VRD Switch
7. Idle Control Switch
8. Starter Switch
9. Fuel Meter
10. Output Control Dial
11. Emergency Stop Switch
12. Single/Dual Selector
13. Arc Control
14. Remote Control

AC OUTPUT PANEL



15. 3-Phase Receptacle (20A)
16. Single-Phase (15A)
17. ELCB
18. Earth Grounding Terminal
19. Single Phase Breaker
20. Bonnet Grounding Terminal

Product Features

RealDual® DUAL WELDING



Shindaiwa's alternator is unique in coil winding. Welding power A, B, and AC generator are driven respectively by each electrode. This feature ensures two independent welding outputs with least mutual interference.

ROBUST ALTERNATOR



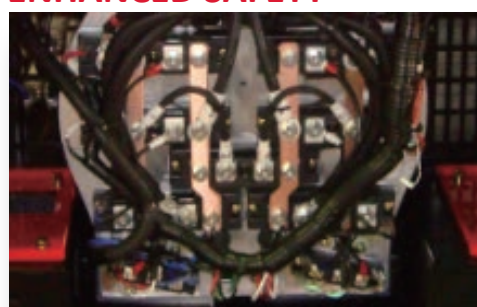
Triple-varnish, standard spec for Shindaiwa's alternator for the global market, offers robust features of protection against sand, gravel, dust, rodent, and burnout including layer short.

TWO REMOTE CONTROL



Two remote control double work efficiency eliminating downtime and possible safety hazards attributable to walking back to the power source.

ENHANCED SAFETY



Temperature sensor inside the alternator prevents burnout by detecting anomalous temperature caused by over loading.